



# Pro-face

## Mitsubishi Electric A Series PLC Ladder Monitor Operation Manual

---

## Introduction

Thank you for purchasing the PLC Ladder Monitor Add-on Kit for the Mitsubishi Electric Corporation A Series. This manual explains the operation for monitoring the ladder programs of the connected device and device addresses using the GP3000 Series programmable Display manufactured by Pro-face (Digital Electronics Corporation).

Please read the manual thoroughly for proper use of this product.

Be sure the manual is always available where this product is used.

### Note




- (1) All programs and manuals of "PLC Ladder Monitor Add-on Kit for Mitsubishi Electric Corporation's A Series" (called the product, hereafter) are copyright of Digital Electronics Corporation and Digital Electronics Corporation shall grant the users the license as described in "Software License". Any conduct violating the "Software License" is prohibited by the laws and regulations in Japan and other countries.
- (2) The manual has been prepared for additional assurance. Should you have any concerns, please contact Digital Electronics Corporation's "Support Line".
- (3) Notwithstanding the previous paragraph, Digital Electronics Corporation shall not be responsible for any damage or other loss, or any claims from a third party as a result of using this product.
- (4) Some parts and product software may differ from the description in the manual due to product improvements. For the latest descriptions, see also the separate document and on-line information.
- (5) The product may record/display some information containing intangible or intellectual property belonging to Digital Electronics Corporation. This shall not grant the users or third parties a guarantee or license for these properties of Digital Electronics Corporation. Digital Electronics Corporation shall not be held responsible for any problems arising from the recording/displaying of a third party's intellectual property using this product.

© Copyright 2008 Digital Electronics Corporation. All rights reserved.

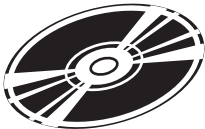
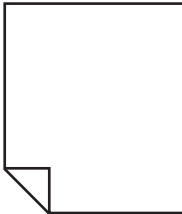


All product names described herein are trademarks or registered trademarks of the respective owners.

## Manual Description

This manual provides following cautions for proper use of the PLC Ladder Monitor Add-on Kit for the Mitsubishi Electric Corporation A Series. The cautions described herein contain important safety information. The following table shows the symbols and what they mean.

Symbol	Meaning
	Failure to follow the instructions on the display may result in adverse events such as device errors or data loss.
	Important points for use.
*	The footnotes contain an explanation of the annotated words.
	Related reference pages are provided.
PLC	Programmable Logic Controller.

## Package Content

Package Content			
CD-ROM: 1	User registry FAX sheet: 1 for Japanese/ English each	Serial barcode sticker: 1	KEYCODE sticker: 1
			
		(Placed on the CD case)	

## ■ Supporting Connected Devices

Maker	Series Name	CPU Model	Link I/F	Communication method*1	Device PLC Names on GP-Pro EX (Version)*2
Mitsubishi Electric Corporation	Q series (A Mode)	Q02CPU-A Q02HCPU-A	CPU Direct	RS-232C or RS-422/485 (4wire)	Mitsubishi Electric Corporation A series CPU direct (V1.13.02 or later)
			A1SJ71C24-R2 A1SJ71C24-R4 A1SJ71UC24-R2 A1SJ71UC24-R4		Mitsubishi Electric Corporation A Series Computer Link (V1.12.02 or later)
	AnA Series	A2ACPU A2ACPU-S1 A3ACPU A2UCPU A2UCPU-S1 A3UCPU A4UCPU	CPU Direct	RS-232C or RS-422/485 (4wire)	Mitsubishi Electric Corporation A series CPU direct (V1.13.02 or later)
			AJ71C24-S6 AJ71C24-S8 AJ71UC24		Mitsubishi Electric Corporation A Series Computer Link (V1.12.02 or later)
		A2USCPU A2USCPU-S1	CPU Direct	RS-232C or RS-422/485 (4wire)	Mitsubishi Electric Corporation A series CPU direct (V1.13.02 or later)
			A1SJ71C24-R2 A1SJ71C24-R4 A1SJ71UC24-R2 A1SJ71UC24-R4		Mitsubishi Electric Corporation A Series Computer Link (V1.12.02 or later)

\*1 Communication mode changes according to type of link unit, cables used, etc. For details, see the relevant driver manuals.

\*2 The driver version can be checked by viewing [Peripheral List] in the [System Settings] window on the GP-Pro EX, or [Driver Version] on [Offline Home] on the display.

### IMPORTANT

- If the driver version of a device connected to the GP-Pro EX is older than that indicated in the table, the ladder monitor will not function normally. You must upgrade the driver to at least the version indicated in the table before using the unit. For the update module, please download it from the Pro-face support site “Otasuke Pro!”.  
(URL <http://www.pro-face.com/otasuke/>)

## ■ Relevant Display

Displays that support the ladder monitor are GP3000 Series models with VGA, SVGA, and XGA resolution. For details on supported models, see the table below.

Series		Models
GP3000 series	GP-3300 series	AGP-3310HT
	GP-3400 series	AGP-3400S
		AGP-3400S-D81
		AGP-3400S-CA1M
		AGP-3400T
		AGP-3400T-D81
		AGP-3400T-FN1M
		AGP-3400T-CA1M
		AGP-3450T
	GP-3500 series	AGP-3500L
		AGP-3500L-D81
		AGP-3500S
		AGP-3500S-D81
		AGP-3500S-CA1M
		AGP-3500T
		AGP-3500T-D81
		AGP-3500T-FN1M
		AGP-3500T-CA1M
		AGP-3510T
		AGP-3510T-CA1M
		AGP-3550T
		AGP-3560T
	GP-3600 series	AGP-3600T
		AGP-3600T-D81
		AGP-3600T-FN1M
		AGP-3600T-CA1M
	GP-3700 series	AGP-3650T
		AGP-3750T

## ■ Screen Creation Software by Pro-face (Digital Electronics Corporation)

GP-Pro EX Ver.2.00 or later

## ■ Mitsubishi Electric Corporation Programming Tools

MELSOFT GX Series GX Developer Ver. 8

### NOTE

- Instructions that can be monitored using this function are those supported by the MELSOFT GX Series GX Developer Ver. 8 programming tool by Mitsubishi Electric Corporation.

---

# Table of Contents

Introduction .....	1
Manual Description .....	2
Package Content .....	2
Table of Contents .....	5

## Chapter 1 Summary

---

1.1 Ladder Monitor .....	1-2
1.2 System Configuration .....	1-3
1.3 Installation Procedure .....	1-4

## Chapter 2 Using the Ladder Monitor

---

2.1 Settings Menu .....	2-2
2.2 Monitoring the Ladder Programs of the Connected Device on a Display .....	2-3
2.2.1 Details .....	2-3
2.2.2 Setup Procedure .....	2-4
2.3 Displaying Ladder Programs in Alarm History View .....	2-10
2.3.1 Details .....	2-10
2.3.2 Setup Procedure .....	2-10
2.4 Printing the Ladder Monitor View from a Display .....	2-12
2.4.1 Details .....	2-12
2.4.2 Setup Procedure .....	2-12
2.5 Capturing and Saving the Ladder Monitor View on a CF Card .....	2-13
2.5.1 Details .....	2-13
2.5.2 Setup Procedure .....	2-13

## Chapter 3 Ladder Monitor Screen Features

---

3.1 Main Screen .....	3-2
3.2 File Selection Screen .....	3-6
3.3 Menu Screen .....	3-8

## Chapter 4 Restrictions

---



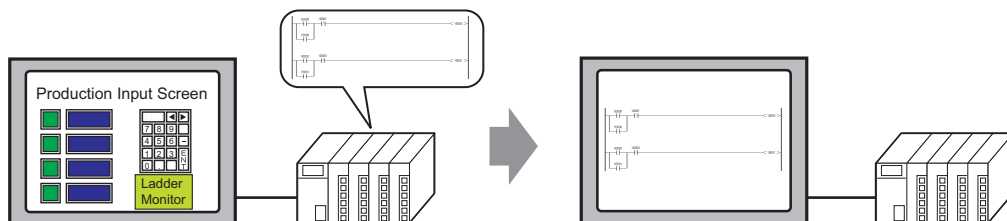
# 1 | Summary

1.1	Ladder Monitor .....	1-2
1.2	System Configuration.....	1-3
1.3	Installation Procedure .....	1-4



## 1.1 Ladder Monitor

The ladder monitor is a feature that reads and monitors the connected device (Mitsubishi Electric Corporation PLC A series) ladder programs on a display screen. It monitors the ladder programs online without stopping other features.



You can use the ladder monitor feature to do the following:

- Monitor the ladder program of the connected device over the internet  
Displays the contact, coil and output instruction in bold/color while they are energized  
Display the I/O comments in the ladder program
- Specify and display the ladder program you wish to check  
Display the ladder monitor simultaneously with the alarm display  
Search for a step number or a device address
- Save the desired ladder program view  
Capture and save the image on a CF Card  
Print the desired ladder program view

### NOTE

- The ladder monitor mode calls the device monitor feature.  
☞ “3.3 Menu Screen” (page 3-8)

See: GP-Pro EX Reference Manual

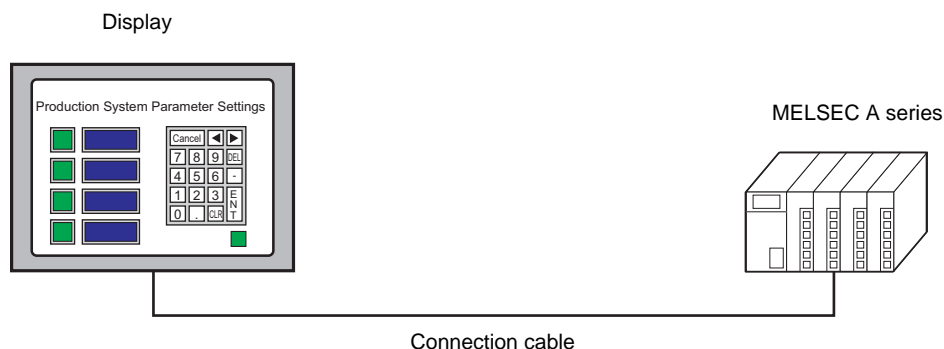
## 1.2 System Configuration

**NOTE**

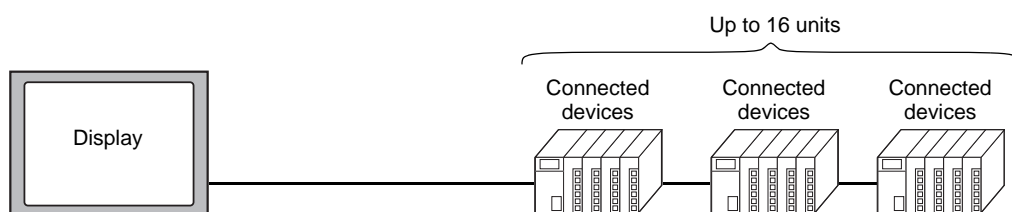
- For details on connecting the display and the connected device, see “Mitsubishi Electric Corporation A Series CPU Direct Driver” or “Mitsubishi Electric Corporation A Series Computer Link Driver” in the “GP-Pro EX Device Connection Manual”.

### ■ Communication Cable Connection

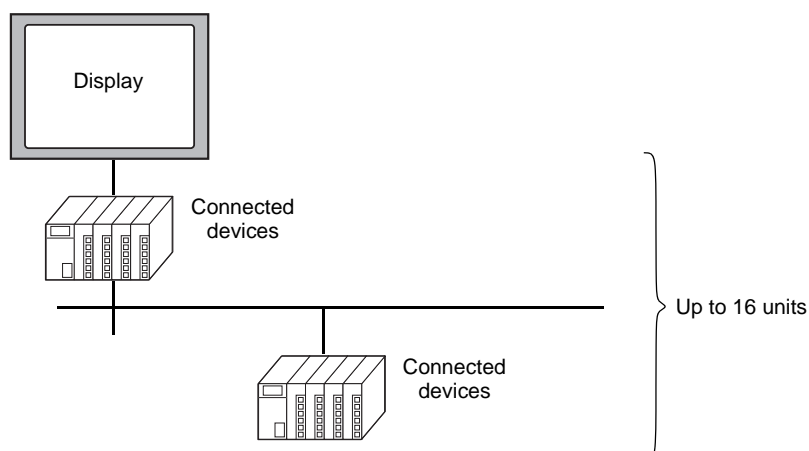
The display and connected device are connected 1:1 with a communication cable.



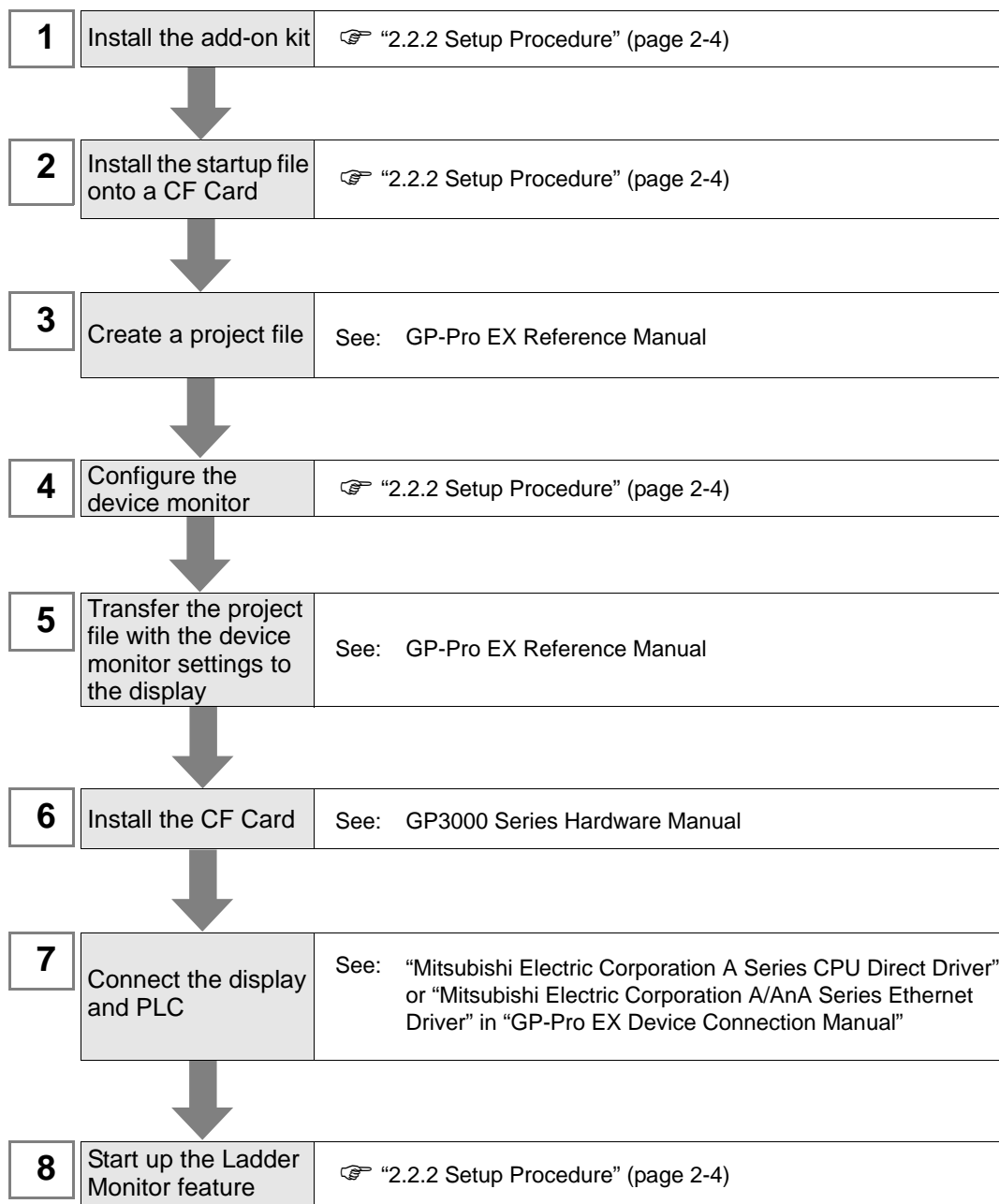
- 1-to-n connection (Only with link connection)



- 1-to-n connection (Only when using a Gateway connected device with link connection)



## 1.3 Installation Procedure

**NOTE**

- GP-Pro EX Manual and the Hardware Manual are available for download on the Pro-face support site “Otasuke Pro!” (<http://www.pro-face.com/otasuke/>). See the manual for GP-Pro EX Ver.2.00 or later.

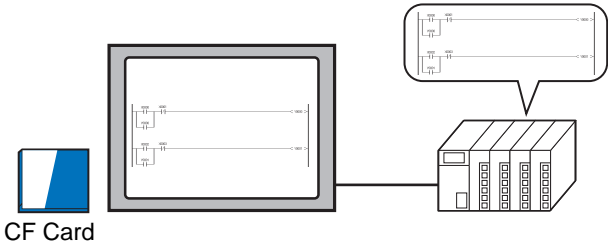
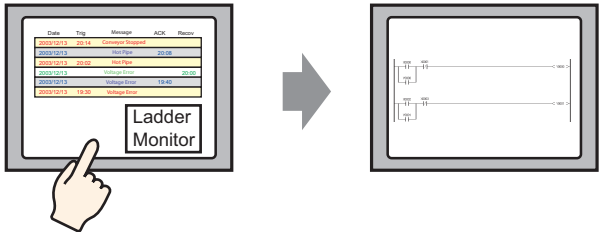
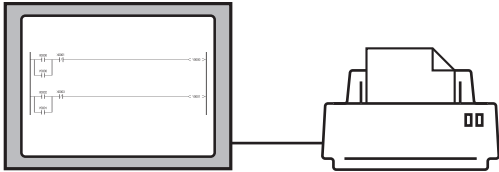
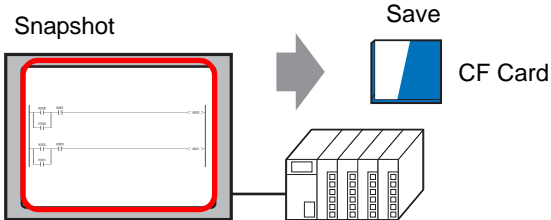
# 2



## Using the Ladder Monitor

2.1	Settings Menu .....	2-2
2.2	Monitoring the Ladder Programs of the Connected Device on a Display .....	2-3
2.3	Displaying Ladder Programs in Alarm History View.....	2-10
2.4	Printing the Ladder Monitor View from a Display .....	2-12
2.5	Capturing and Saving the Ladder Monitor View on a CF Card .....	2-13

## 2.1 Settings Menu

Monitoring the Ladder Programs of the Connected Device on a Display	
<div><p>CF Card</p><p>You can display the ladder program of the connected device on a display screen.</p></div>	<div><p>☞ “2.2.1 Details” (page 2-3)</p><p>☞ “2.2.2 Setup Procedure” (page 2-4)</p></div>
Displaying the Relevant Ladder Programs Simultaneously from Alarm History	
<div><p>You can display the device for which the alarm is sounding directly from the alarm history screen.</p></div>	<div><p>☞ “2.3.1 Details” (page 2-10)</p><p>☞ “2.3.2 Setup Procedure” (page 2-10)</p></div>
Printing the Ladder Monitor Screen on a Display	
<div><p>You can output the Ladder Monitor screen from a printer connected to the display.</p></div>	<div><p>☞ “2.4.1 Details” (page 2-12)</p><p>☞ “2.4.2 Setup Procedure” (page 2-12)</p></div>
Capturing and Saving the Ladder Monitor Screen on a Display onto a CF Card	
<div><p>Snapshot</p><p>Save</p><p>CF Card</p><p>You can capture the displayed Ladder Monitor screen and save it to a CF Card.</p></div>	<div><p>☞ “2.5.1 Details” (page 2-13)</p><p>☞ “2.5.2 Setup Procedure” (page 2-13)</p></div>

## 2.2 Monitoring the Ladder Programs of the Connected Device on a Display

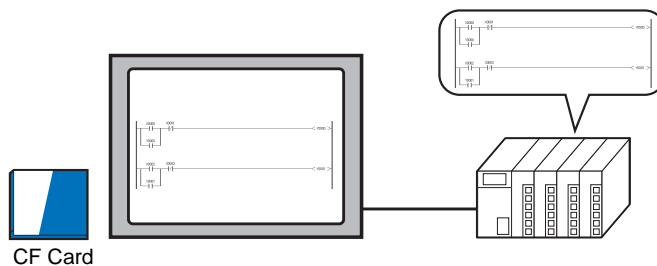
### 2.2.1 Details

---

**NOTE**

- See the following pages for the detailed settings.  
☞ Chapter3 "Ladder Monitor Screen Features" (page 3-1)
- 

With the Ladder Monitor you can remotely view, search, and edit the ladder program of the connected device as it appears on the HMI.



---

**IMPORTANT**

- The CF Card must have 100 MB or more of free space.
- 

---

**NOTE**

- See the following pages for the search feature.  
☞ "3.3 Menu Screen" (page 3-8)
-

## 2.2.2 Setup Procedure

- 1 Install the Ladder Monitor CD-ROM onto a PC installed with GP-Pro EX. Run Setup.exe on the CD to launch the installer. Follow the installer instructions to install.

---

**IMPORTANT**

- Your PC must have GP-Pro EX Ver.2.00 or later installed. For the OS, see the GP-Pro EX Reference Manual.
- 

- 2 Install the startup file on a CF Card.

---

**IMPORTANT**

- To use this feature, the CF Card must have 100 MB or more of free space.
- 

- 1) Install a CF Card onto the PC.
- 2) Start the installer by clicking on the Setup.exe file on the ladder monitor CD-ROM.
- 3) Select the setting language.
- 4) The Mitsubishi Electric Corporation A Series PLC Ladder Monitor Setup Program will launch. Enter the serial no. and key code. A window appears prompting you to select an install location. Set the CF Card root directory (i.e. the top directory) as the install location.
- 5) The startup file will be installed.


- 3 Create a project file.

There are four ways to start the Ladder Monitor. To start the monitor without using the system menu, you must configure the settings for starting the Ladder Monitor in GP-Pro EX in advance.

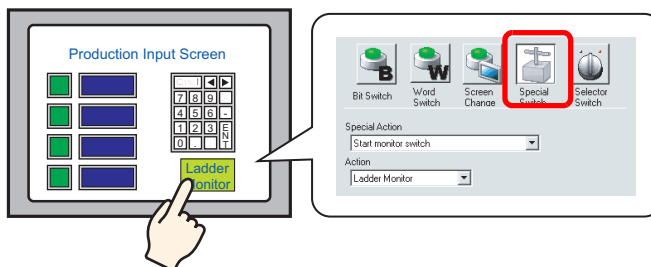
- System menu
- Switch parts
- LS area
- System variables:
  - #H\_LadderMonitor (no cache)
  - #H\_LadderMonitorCache (with cache)


---

**NOTE**

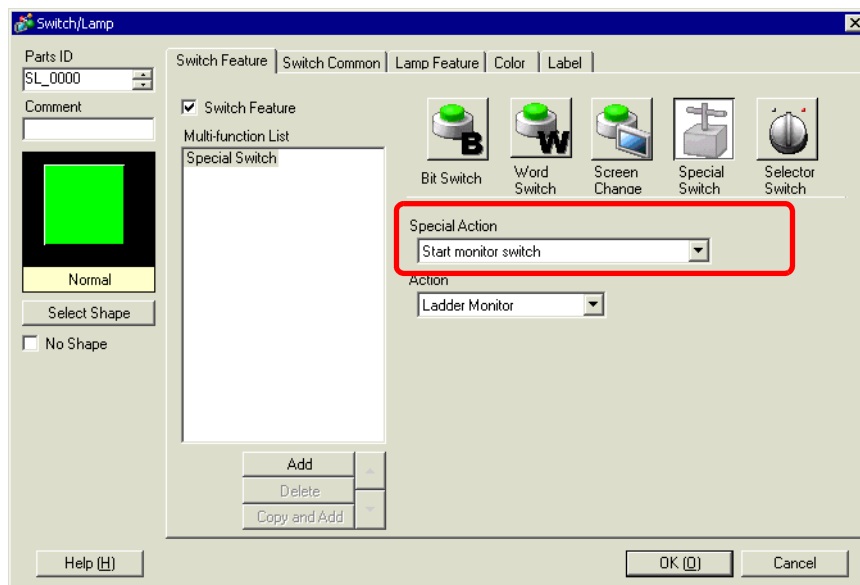
- To start up using the system menu, see the following pages.  
 Setup Procedure 8 "Start up the Ladder Monitor." (page 2-9)
-

## ■ Start up procedure from switch parts



- 1) From the [Parts (P)] menu, point to [Switch Lamp (C)] and select [Special Switch (P)] or click . Click and drag to place a switch is placed on the screen.
- 2) Double-click the switch you placed and in [Special Action] select [Start monitor switch]. In [Action], select [Ladder Monitor] or [Ladder Monitor (Cache)].
  - Ladder Monitor  
Reads the ladder programs from the connected device every time you click the switch. The ladder program that is being forwarded is displayed on the connected device but it may take time to read.
  - Ladder Monitor (Cache)  
Reads the ladder programs saved on the CF Card when you click the switch, reducing the read time. To update the ladder programs on the CF Card, in [Main Screen] on the GP, select [Read].

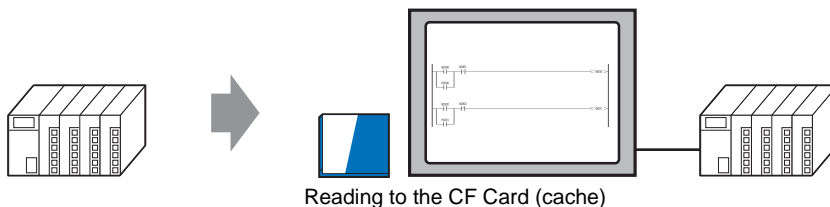
☞ “3.1 Main Screen” (page 3-2)





**NOTE**

- Read the cache from a CF Card  
Normally, every time you start the Ladder Monitor, it communicates with the PLC to read the ladder programs and it may take time to display the ladder programs. To improve the display update speed, the Ladder Monitor feature reads the ladder programs of the connected device onto the device CF Card (cache) first and then displays them.



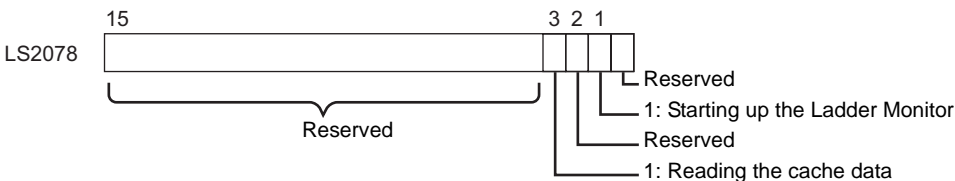
If you change the ladder programs on the connected device after reading the ladder programs of the connected device to the display CF Card, read the ladder programs to the CF Card again. In [Menu Bar] on the GP, select [Read].

☞ “3.1 Main Screen” (page 3-2)

- 3) Select [Select Shape], [Color], [Label], and any other features you require and click OK.

■ Start up procedure from the LS area

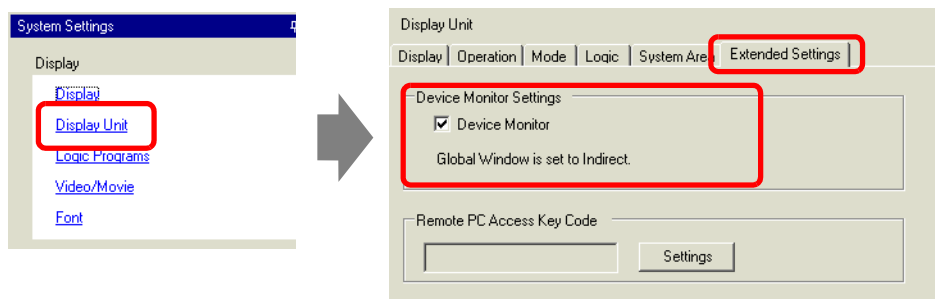
The Ladder Monitor starts up if you turn ON bits in the LS area. Configure the settings for turning ON the following bits using switch parts and D-scripts.



Bit 1	Turn ON to start up the Ladder Monitor.
Bit 3	<div>Turn ON to start the Ladder Monitor and display the ladder programs cached on the CF Card.</div> <div><div>NOTE</div><div><ul style="list-style-type: none"><li>If the programs are not cached in advance, the bit only triggers the same action as Bit 1 turning ON (starts up the Ladder Monitor). To update the ladder programs on the CF Card, in [Main Screen] on the GP, select [Read].</li></ul><div> "3.1 Main Screen" (page 3-2)</div></div></div>

**IMPORTANT** • Bits other than Bits 1 and 3 are reserved. Do not use them.

- 4 Register the device monitor feature. In GP-Pro EX, from [System Settings], point to [Display Unit] and select [Extended Settings]. Select the [Device Monitor] checkbox.



### NOTE

- The device monitor screen uses a global display window. While the device monitor is displayed, the screen cannot display other global windows. When you select the [Device Monitor] checkbox, [Global Window] operation is automatically set to [Indirect].
- For manual settings, in the display system menu, point to [Offline], select [Main Unit], and select [Window Settings]. Configure the following settings in [Global Window Operation]:

Global Window Operation: Indirect  
Data Type : BIN

- 5 Save and transfer the project file to the display.

Reference: GP-Pro EX Reference Manual

- 6 Install the CF Card onto the GP.

Reference: For details on installing a CF Card, see “GP3000 Series Hardware Manual”.

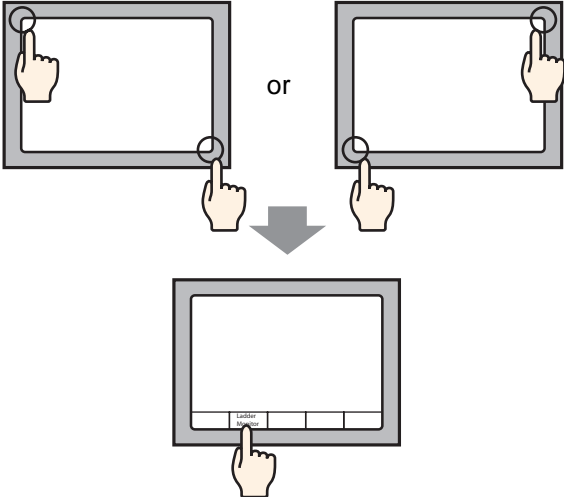
- 7 Connect the display to communicate with the connected device.

Reference: For details on the connection, see “GP-Pro EX Device Connection Manual”

8 Start up the Ladder Monitor.

There are four ways to start up the Ladder Monitor.

- System menu
- Switch parts
- LS area
- System variables:  
#H\_LadderMonitor (no cache)  
#H\_LadderMonitorCache (with cache)

Ladder Monitor Startup	Detail
Start up with the System Menu	<p>On the screen, touch the top left → on the bottom right (or the top right → on the bottom left) in this order within 0.5 Seconds to display the system menu. Touch the [Ladder Monitor] button to display the main screen.</p> 

NOTE

- To start up using switch parts or the LS area, see the following pages.
  - ➡ Setup Procedure “■ Start up procedure from switch parts” (page 2-5)
  - ➡ Setup Procedure “■ Start up procedure from the LS area” (page 2-7)

9 When the ladder monitor starts up, the Device/PLC Selection screen is displayed. Select the connected device for the ladder program you wish to monitor. The screen jumps to the File Selection screen.



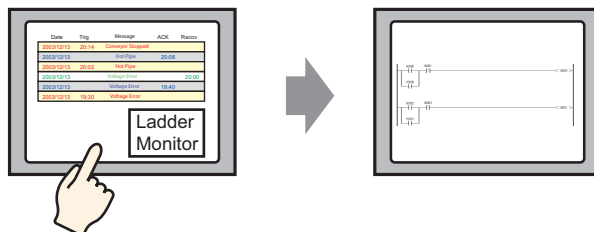
NOTE

- For the File Selection screen, see the following pages.
  - ➡ “3.2 File Selection Screen” (page 3-6)


## 2.3 Displaying Ladder Programs in Alarm History View

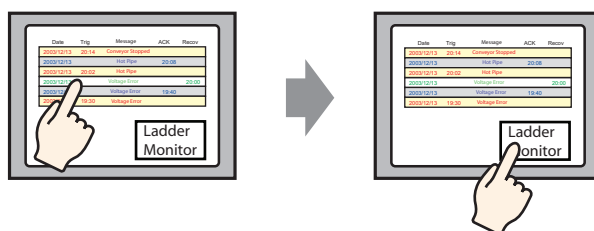
### 2.3.1 Details

Place the Ladder Monitor startup switch on the alarm history screen. This allows you to display the device whose the alarm is sounding directly from the history screen.



### 2.3.2 Setup Procedure

- 1 Place the Ladder Monitor startup switch on the alarm history screen.  
 "2.2 Monitoring the Ladder Programs of the Connected Device on a Display" (page 2-3)
- 2 On the alarm history screen, touch the alarm you wish to monitor.  
 Next, touch the Ladder Monitor startup switch.



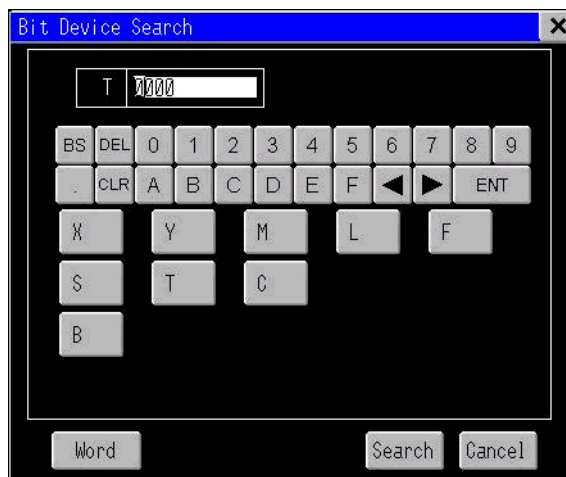
## 3 The device search keypad is displayed.

The device address you selected on the alarm history screen is automatically entered.

Touch [Search]

### NOTE

- Select the appropriate connected device and read it. After reading is completed the device search keypad is displayed.



## 4 The ladder programs will be displayed starting with the device for which the alarm sounded.



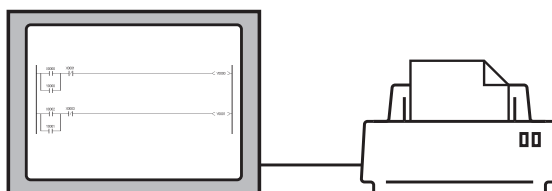
### NOTE

- The previously read ladder program is displayed again. Therefore, the ladder program for which the alarm sounded may not be displayed when multiple devices are connected. If this occurs, delete the cache data (LADDER.DAT) from the CF Card and start the ladder monitor from the alarm history. Cache data is saved in the following location:  
A Series CPU Direct Driver: "PLCLDMON\MIT\_ACPU\LADDER.DAT"  
A Series Computer Link Driver:  
"PLCLDMON\MIT\_ALINK\LADDER.DAT"

## 2.4 Printing the Ladder Monitor View from a Display

### 2.4.1 Details

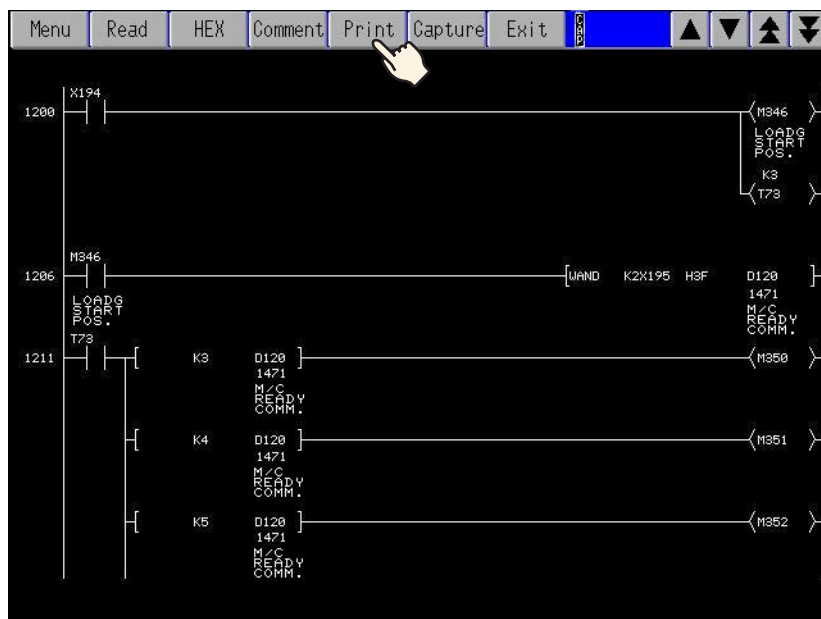
You can output the Ladder Monitor screen from a printer connected to the display. This allows you to efficiently save and analyze data.



### 2.4.2 Setup Procedure

- 1 Connect the display to the printer.  
Reference: GP-Pro EX Reference Manual

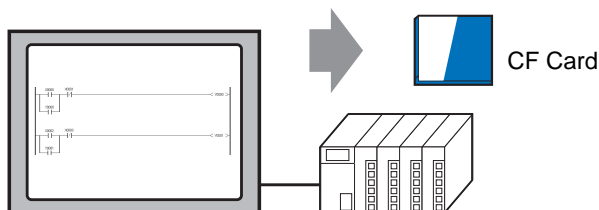
- 2 On the Ladder Monitor main screen, touch [Print].



## 2.5 Capturing and Saving the Ladder Monitor View on a CF Card

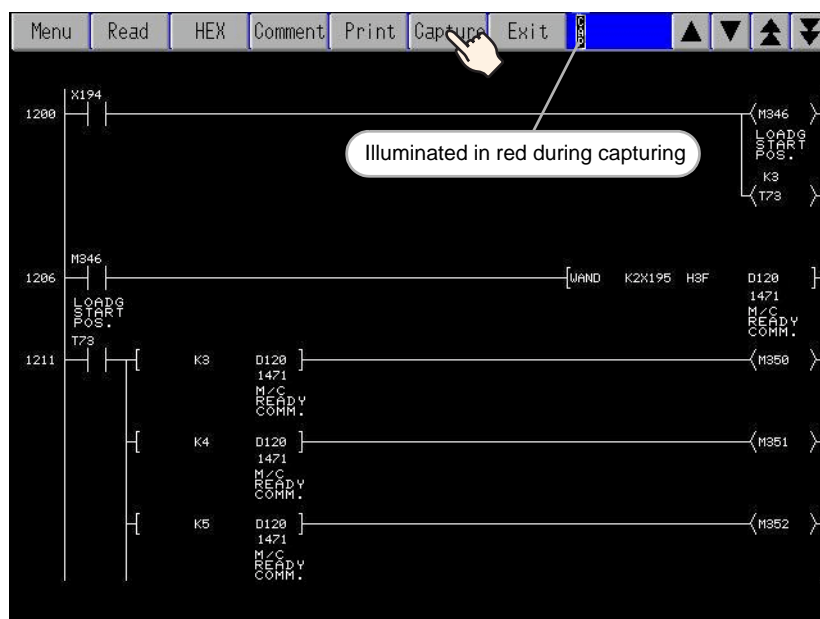
### 2.5.1 Details

You can capture and save the Ladder Monitor screen on a CF Card. This allows you to efficiently save and analyze data.



### 2.5.2 Setup Procedure

- 1 On the Ladder Monitor main screen, touch [Capture].



- 2 The currently displayed screen is captured. A folder titled "CAPTURE" is automatically created in the CF Card root directory (i.e. the top directory), and the data is automatically saved to this folder. The file name is "CP\*\*\*\*\*\_GP.jpg" and \*\*\*\*\* is an automatically assigned number from 0 to 65535.

#### NOTE

- The time required for screen capture differs depending on the image quality and screen size. The file size for an image quality of 80 is approximately 200k bytes, and the capture (snapshot) takes 5 to 6 seconds. To change the image quality, from the GP-Pro EX [System Settings], point to [Display Unit] and select [Mode]. In [Screen/Video Capture Settings] change the [Capture Image Quality] setting.
- If you continuously touch the capture (snapshot) button, the screens may not be captured properly. Allow some time between captures (snapshots).



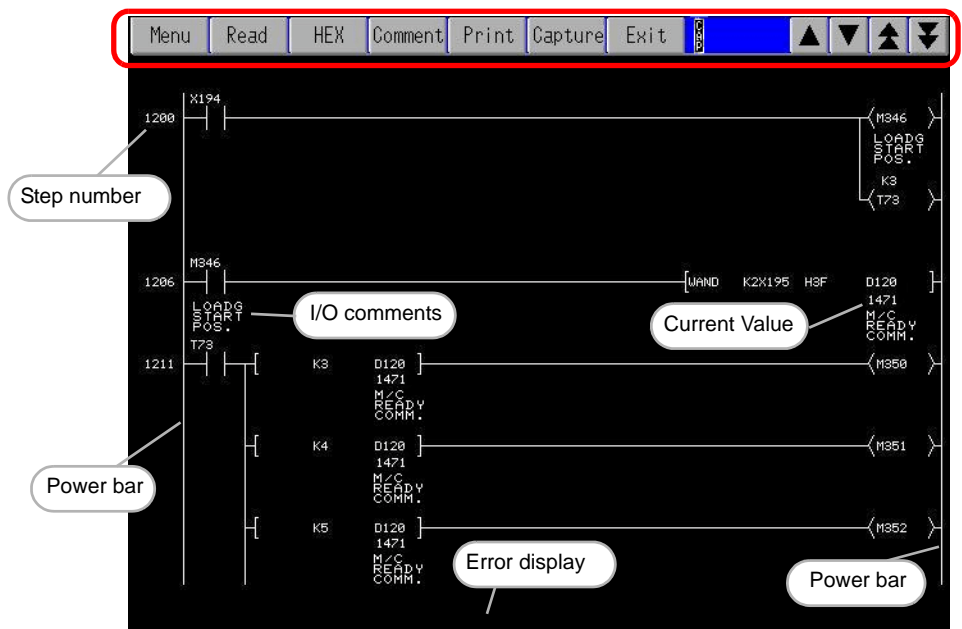


# 3 | Ladder Monitor Screen Features

3.1	Main Screen .....	3-2
3.2	File Selection Screen .....	3-6
3.3	Menu Screen.....	3-8

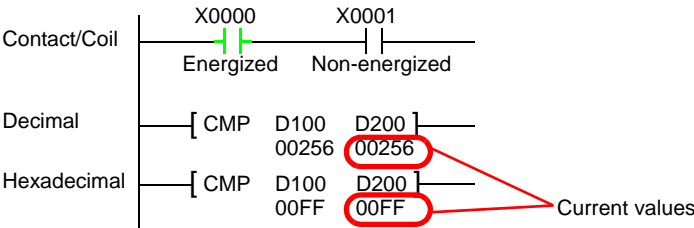
### 3.1 Main Screen

Names and Features on the Main Screen

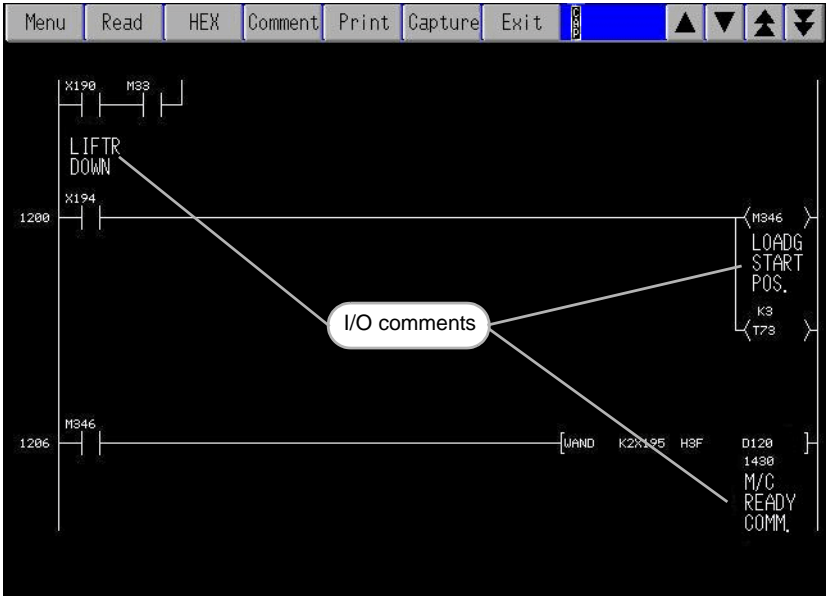


Setting	Description
Menu	This displays the menu screen. For details, see the following pages. ☞ “3.3 Menu Screen” (page 3-8)
Read	This displays the file selection screen where you select the ladder program to read. For details, see the following pages. ☞ “3.2 File Selection Screen” (page 3-6)

Continued

Setting	Description
Decimal/ Hexadecimal	<p>This switches between decimal and hexadecimal monitor data values (current values). The switch display changes between [Decimal] and [Hexadecimal] every time it is touched.</p> <p><b>NOTE</b></p> <ul style="list-style-type: none"><li>Monitor data values (current values) are displayed in the following two ways: <b>Contact/Coil</b> Displays energized/non-energized state by the thickness of parts lines. An energized state is displayed in bold lines. <b>Decimal/Hexadecimal</b> Data is displayed in parallel with devices. Monitor data values for bit devices are displayed in bits. Monitor data values for word devices are displayed in words.</li></ul> 

Continued

Setting	Description
Comment	<p>This selects the display method for I/O comments.</p> <p>Touch to switch Short Comment Mode --&gt; Compressed Comment Mode -&gt; No Comment Mode in this order.</p> <ul style="list-style-type: none"> <li>• Short comment mode This displays up to 5 single-byte characters x 3 lines of comments.</li> <li>• Compressed comment mode This displays up to 5 single-byte characters x 6 lines of comments. This displays the characters compressed to 1/2 vertical size.</li> <li>• No comment mode This displays no I/O comments.</li> </ul>  <p><b>NOTE</b></p> <ul style="list-style-type: none"> <li>• To see the full comments when only a portion is displayed, touch the relevant comment. The bottom left of the screen displays up to 32 single-byte characters or 16 double-byte characters of comments.</li> </ul>
Print	This prints the Ladder Monitor screen.
Capture	This captures and saves the Ladder Monitor screen to a CF Card.
Exit	This closes the Ladder Monitor.
▲ ▼	This scrolls the Ladder Monitor screen line by line.
⬅ ➡	This takes you to the previous/next page.

Continued

**NOTE**

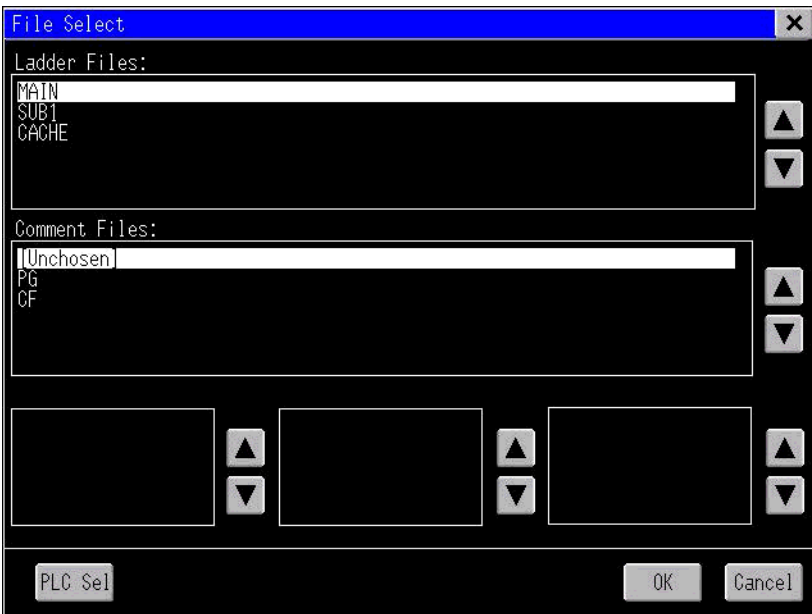
- The ladder rungs that you can display differ depending on the comment mode.

Type	Window Size	No Comments	16 x 16 Comments	16 x 8 Comments
VGA	640 x 480	10 lines	4 lines	6 lines
SVGA	800 x 600	13 lines	5 lines	8 lines
XGA	1024 x 768	17 lines	7 lines	10 lines

- Comments and current values are not displayed for annunciators (F devices), pointers (P devices), and interrupt pointers (I devices).
- Comments and current values are not displayed for indirectly specified devices ( $\Delta \square V \square$ ,  $\Delta \square Z \square$ ) or devices specified by number of digits ( $K \square \Delta \square \square$ ). ( $\Delta$  device,  $\square$  numeral)
- When using the Mitsubishi Electric Corporation A Series CPU Direct Driver, comments and current values are not displayed for step relays (S devices)
- Set values for extended timers and extended counters are not displayed.
- Reload the ladder program after changing timer and/or counter settings with the Mitsubishi Electric Corporation programming tools.
- When using the Mitsubishi Electric Corporation A Series CPU Direct Driver, after changing connected device parameters using the Mitsubishi Electric Corporation programming tools, you must either display the offline screen, or reset the display. If you do not do so, the device will not be displayed correctly.

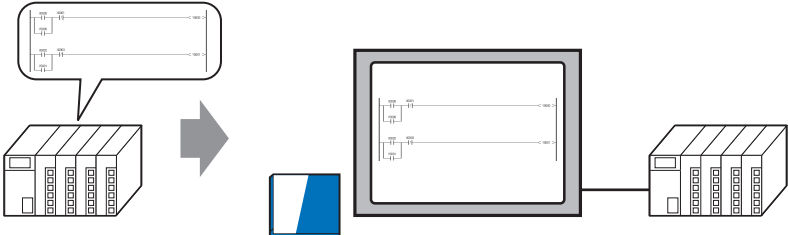

### 3.2 File Selection Screen

Names and Features on the File Selection screen



Setting	Description
Ladder Files	This selects the Ladder Programs to be read. MAIN: MAIN Ladder Programs of the connected device SUB1: SUB1 Ladder Programs of the connected device CACHE: Ladder Programs cached on the CF Card
Comment Files	This selects the comment files to be read. PG: Comment files of connected devices CF: Comment files saved on the CF Card (*.WCD)
PLC Sel	This moves to the device/PLC selection screen.

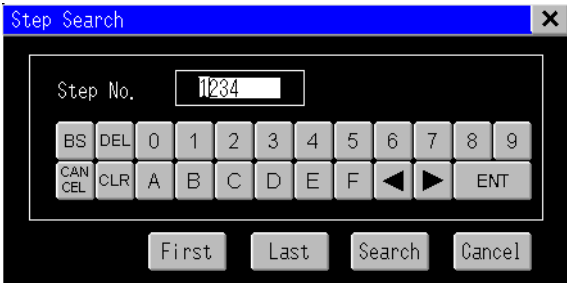

Continued

Setting	Description
OK	<p>This reads the ladder programs onto a CF Card.</p> <p><b>NOTE</b></p> <ul style="list-style-type: none"> <li>The read button triggers saving of only ladder programs and comments to the CF Card. It always reads and displays the latest numeric values from the connected device.</li> </ul>  <p>Reading to a CF Card</p> <p>If you change the ladder programs or comments on the PLC after reading the data of the connected device to the CF card of the display, the Ladder Monitor for the display will not be updated. Read the data again to update the saved data.</p> <p>Cache the ladder programs on the CF Card to increase the display speed instead of reading data from the connected device every time.</p> <ul style="list-style-type: none"> <li>Create the folder below CF Card to speed up comment display. Copy comment files (*.WCD) created with the GX-Developer Ver. 8 programming tool by Mitsubishi Electric Corporation to this folder. This reduces the time taken to display comments because it does not involve reading from the connected device. When using the Mitsubishi Electric Corporation A Series Computer Link Driver, create a folder with the name of the device, and save comment files in it.</li> </ul> <p>☞ “3.2 File Selection Screen” (page 3-6)</p> <p>A Series CPU Direct: “PLCLDMON\MIT_ACPU”</p> <p>A Series Computer Link: “PLCLDMON\MIT_ALNK\ device name”</p> <p>Note the following points when displaying comment data read from a CF Card:</p> <ul style="list-style-type: none"> <li>Do not change the names of comment files created with the GX-Developer programming tool by Mitsubishi Electric Corporation.</li> <li>Comment files are displayed as either program-specific comment files (MAIN.WCD, SUB1.WCD) or universal comment files (COMMENT.WCD).</li> <li>When both kinds of comment file exist in a folder where comment files are saved, program-specific comment files are displayed (MAIN.WCD, SUB1.WCD).</li> </ul> <p>For details on comment and ladder files, see below.</p> <p>☞ “3.2 File Selection Screen” (page 3-6)</p>
 /Cancel	<p>This closes the file selection screen and returns to the previously displayed screen.</p>





3.3 Menu Screen



Setting	Description
Step Search	<p>This searches by the step number (number of steps) of the ladder program. This displays the ladder program with the specified step number (number of steps) at the top of the screen.</p> 
Device Search	<p>This searches by the device address. This displays the ladder program with the specified device address at the top of the screen.</p>  <p><b>NOTE</b></p> <ul style="list-style-type: none"><li>When you touch a device on the screen twice, the [Device Search] dialog box will appear. Using its device address as the key, you can search the desired ladder program.</li></ul>

Continued

Setting	Description
Coil Search	<div>This searches by output instruction. This displays the ladder program with the specified output instruction at the top of the screen.</div> <div></div>
Device monitor	This displays the device monitor screen.
	This closes the menu screen and returns to the previously displayed screen.

NOTE

- For the device monitor feature, see the following manual.  
See: GP-Pro EX Reference Manual



# 4 | Restrictions


---

## Ladder Monitor Restrictions

---

- Depending on the version, your programming tool may not be able to display ladder programs. For the versions supporting programming tools, see the Pro-face support site “Otasuke Pro!”. For the instructions that you can monitor, see the manual of the connected device.
- To use this feature, your CF Card must have 100 MB or more of free space.
- When reading the ladder program, you cannot read only the comment file.
- Up to 24 lines are displayed per circuit. The 25th line and after are not displayed. If you specify a device located in the 25th line or after when searching for a device, the start of the circuit where the device is located will be displayed but the specified device itself will not be displayed.
- The power flow is shown by the contact/coil in bold, but the lines connecting contacts to contacts do not change.
- The time taken for a screen capture depends on the image quality and screen size. The file size for a screen quality of 80 will be approximately 200 KB and the capture will take about 5 to 6 seconds.
- If you continuously touch the capture (snapshot) button, the screens may not be captured properly. Allow some time between captures (snapshots).
- Ladder program and comment password settings are not supported. When a [Stop Read/Write] password is used, reads will cause a communication error.
- Please use CF Cards manufactured by Pro-face (Digital Electronics Corporation). If using another company’s CF Card, damage may occur to the CF Card data.
- SUB2 and SUB3 of the A4U Series are not supported.

## ■ Error Messages

Error Messages	Solution
There is no CF-Card in the GP.	Please check if the CF Card is inserted properly.
It failed to read a file in the CF-Card.	<ul style="list-style-type: none"> <li>• Please check if the CF Card is inserted properly.</li> <li>• When the ladder program is set as CACHE, it is possible that a cache does not exist on the CF Card. In this case, read the ladder program again.</li> </ul>
It failed to write a file in the CF-Card.	<ul style="list-style-type: none"> <li>• Please check if the CF Card is inserted properly.</li> <li>• Please check if the CF Card has enough space.</li> <li>• Check that the “PLCLDMON\MIT_ACPU” or “PLCLDMON\MIT_ALNK” folders on the CF Card are not set to “ReadOnly”.</li> </ul>
It failed to load the Ladder Monitor.	<ul style="list-style-type: none"> <li>• Please check for damage to the CF Card.</li> <li>• Please format the CF card to either FAT32 or FAT, and try again.</li> </ul>
The Ladder Monitor can't start because the Runtime version is old.	Use the latest version of GP-Pro EX and download the system to the GP.
The Ladder Monitor can't start because the version is old.	Install the latest version of the ladder monitor onto the CF card.  “2.2.2 Setup Procedure” (page 2-4)
There are unsupported instructions.	This message appears when an instruction is used that is not supported by the Ladder Monitor. Please check the version of the programming tool.
The communication error occurred.	Please check if the connected device and cables are connected properly. If a password is used in the ladder program file, please remove that password.

